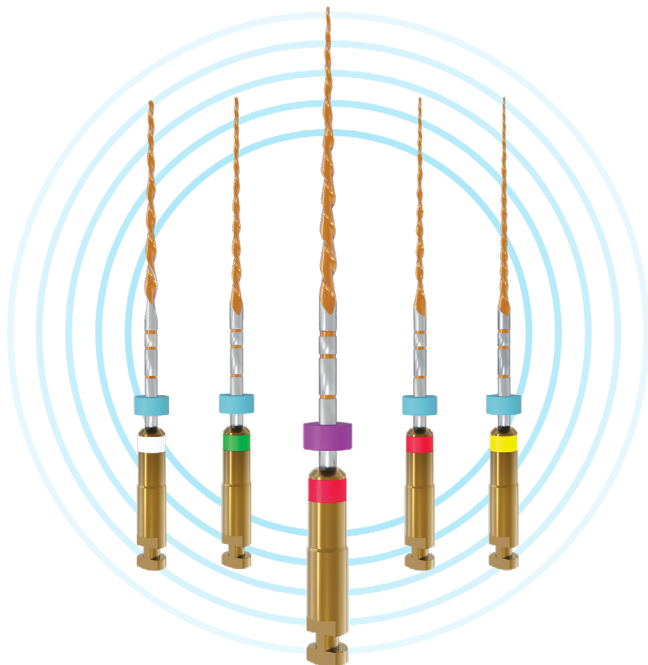


MicroMega

ROOT CANAL SHAPING

# One RECI



Exploring new directions

**MM** MICRO  
MEGA

# MicroMega One RECI

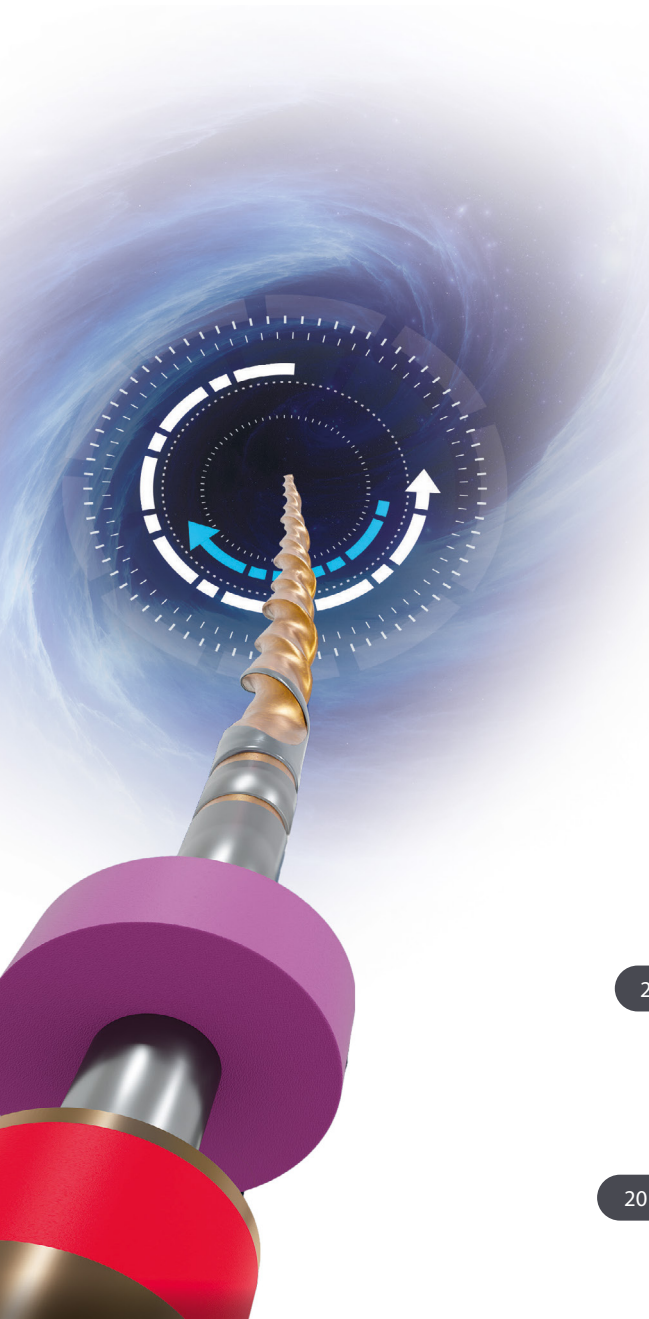
## Exploring new directions

- Cutting efficiency: patented variable, asymmetrical cross-section
- Safety: cyclic fatigue resistance
- Flexibility: respect of the root canal anatomy thanks to C.Wire heat treatment

### MicroMega One RECI

5 instruments, pre-sterilized blister

References	L21	L25	L31
B5 MicroMega One RECI n20 4% Sterile, 5 pcs	60029878	60029883	60029888
B5 MicroMega One RECI n25 4% Sterile, 5 pcs	60029879	60029884	60029889
B5 MicroMega One RECI n25 6% Sterile, 5 pcs	60029880	60029885	60029890
B5 MicroMega One RECI n35 4% Sterile, 5 pcs	60029881	60029886	60029891
B5 MicroMega One RECI n45 4% Sterile, 5 pcs	60029882	60029887	60029892
B5 One RECI Assorted Sterile	60029898	60029899	60029900



Motor speed

400 rpm



Reciprocating angles

170° / 60°



Wire diameter

1.00mm



Tapers

4%

6%



Available lengths

21mm

25mm

31mm



Diameters

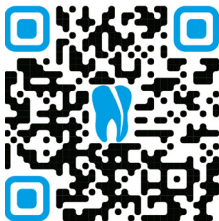
20

25

35

45

# Visit the product page !



[micro-mega.com](https://micro-mega.com)

# Follow us on socials !



[@micromega\\_international](https://www.instagram.com/micromega_international)



[Micro-Mega SA](https://www.linkedin.com/company/micro-mega-sa)



[Micro-Mega International](https://www.facebook.com/micro-mega-international)

80000213-D-03.26

Legal manufacturer :

**Micro-Mega SA**  
12 rue du Tunnel  
25000 BESANCON / France  
T +33 3 81 54 42 42  
[mm.sales@coltene.com](mailto:mm.sales@coltene.com)

MicroMega One RECI  
Advertising | Medical device class IIa  
according to Directive 93/42/EEC | Notified  
body : GMED | Medical device for dental care,  
meant for professional dental use only. See  
product labelling and instructions for use on  
the website : [micro-mega.com](https://micro-mega.com)

CE<sub>0459</sub>

 **COLTENEGROUP**